



TSL-ESCHA

More Passenger Comfort and Safety with User-Friendly Products



Push buttons in the door area on the outside of the bus help passengers open the doors and meet the normative requirements for handicapped passengers (Photo: TSL-ESCHA)

Inside and Outside of the Bus

Both city buses and intercity buses are optimised to meet two main requirements: high transport capacity and fast passenger transfer. This makes wide entry and exit doors essential. Products from MAFELEC and TSL-ESCHA help passengers get on and off the bus smoothly. Push buttons in the door

area on the outside of the bus help passengers open the doors and meet the normative requirements for handicapped passengers. Braille and tactile pictograms are available. All products are offered in a wide variety of colours and pictograms.

The interior of a bus is designed to be as functional as possible. Push buttons are mounted on numerous handrails, helping passengers signal a stop request. This makes the

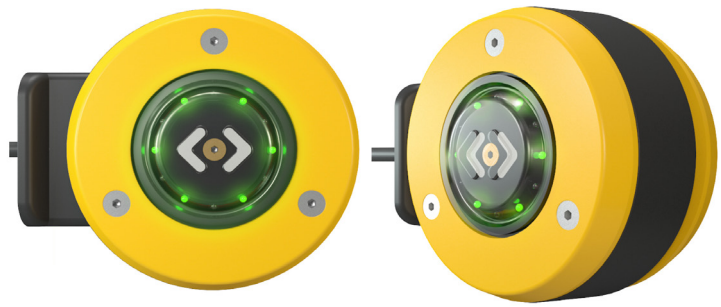
passengers' ride as comfortable as possible. For bus interiors, MAFELEC and TSL-ESCHA offer user-friendly components such as push buttons, handrail buttons, door control units and LED signal lights. They help passengers board and disembark in greater comfort and safety. The stop request buttons, e.g. the HST series by TSL-ESCHA and the M360 series by MAFELEC, give you a very durable product to use in your vehicle, as underlying inscriptions

and pictograms are protected by scratch-resistant polyamide. This ensures that the push buttons always look good.

New Modern Design of the PK Push Button Series for Double-Sided Glass Installation

The PK push button series has been in reliable and proven use in buses and trains for decades. Now the glass mounting variant has a modern and optimised design for installation in the glass. The new spacer ring is now restrained and therefore adapts perfectly to the door design. The plastic housing, which meets the increased fire protection requirements, is uniformly black. This increases the contrast of the push button to the mounting surface. The door opening push button is thus much better accentuated and stands more in the foreground. Indoor and outdoor push buttons now have a consistent design. The mounting ring can be selected from the usual wide range of colour variants.

The special feature: thanks to the movable cable cover, the new spacer ring can be easily adapted to different door profiles and thus compensate for tolerances



Double-sided PK push button with new spacer ring (Photo: TSL-ESCHA)

and gaps. The cable covers are available for five different angles for adaptation to the respective door profiles.

The new spacer ring for the PK is compatible with the one for the PK52 push button series. The PKM indicator light and the PKW buzzer have a similar construction to the PK push button series and can also be used for single and double-sided installation in glass doors with the new spacer ring.

Whether push buttons, handrail buttons, sounders, LED signal lights or door indicator lights – passenger comfort and safety are constantly being enhanced through further development of the products.

TSL-ESCHA GmbH

TSL stands for Touch, Signal and Light. TSL-ESCHA develops, manufactures and distributes individual customer solutions for

public transportation and robust LED lighting for industry. Door opening push buttons, signal lights, sounders, indicator and display devices as well as LED lighting are part of the product portfolio and meet TSI-PRM standards for bus, trains and emergency vehicles. TSL-ESCHA, located in Halver (Germany), is part of the MAFELEC TEAM. The French group of companies is active in the markets of bus and railway, industrial vehicles, industry, energy, defence, aerospace and elevators.

TSL-ESCHA GmbH

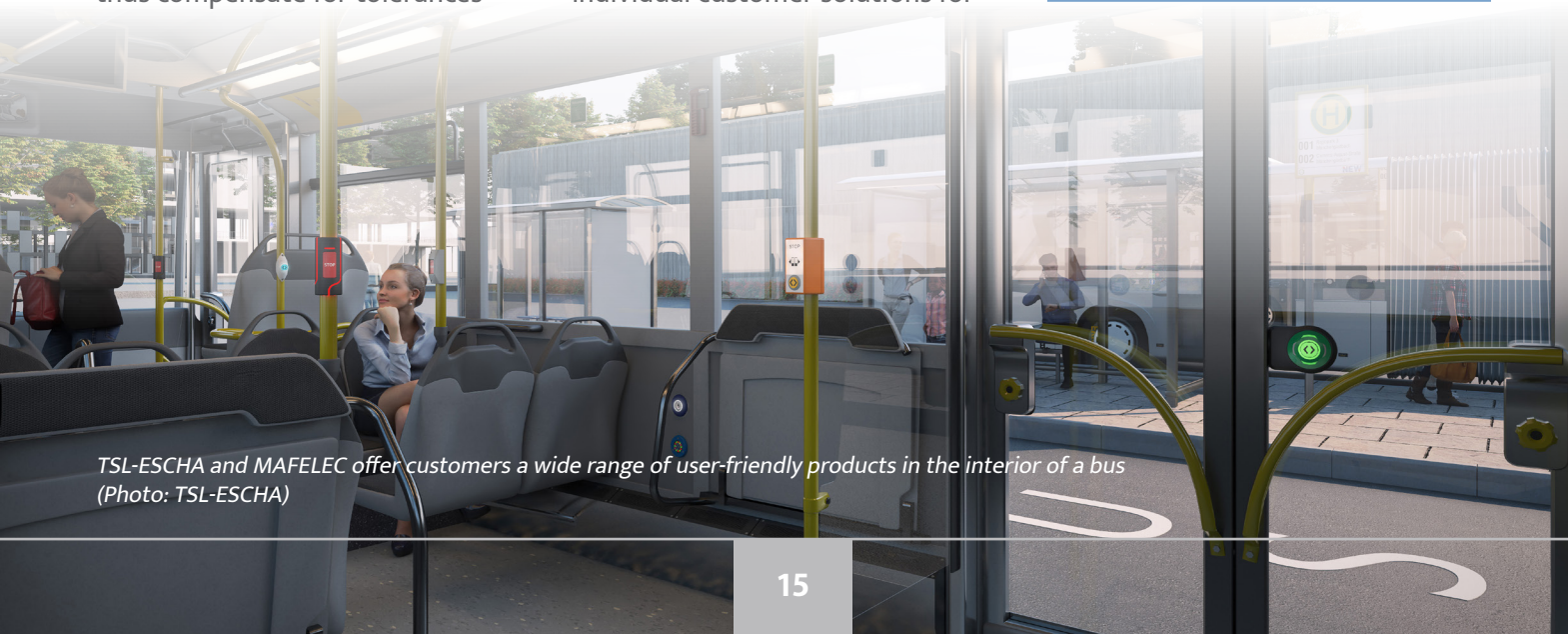
Michael Kipp

Elberfelder Str. 1
58553 Halver – Germany

+49 2353 66796-0

info@tsl-escha.com

www.tsl-escha.com

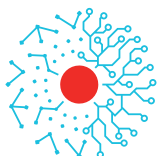
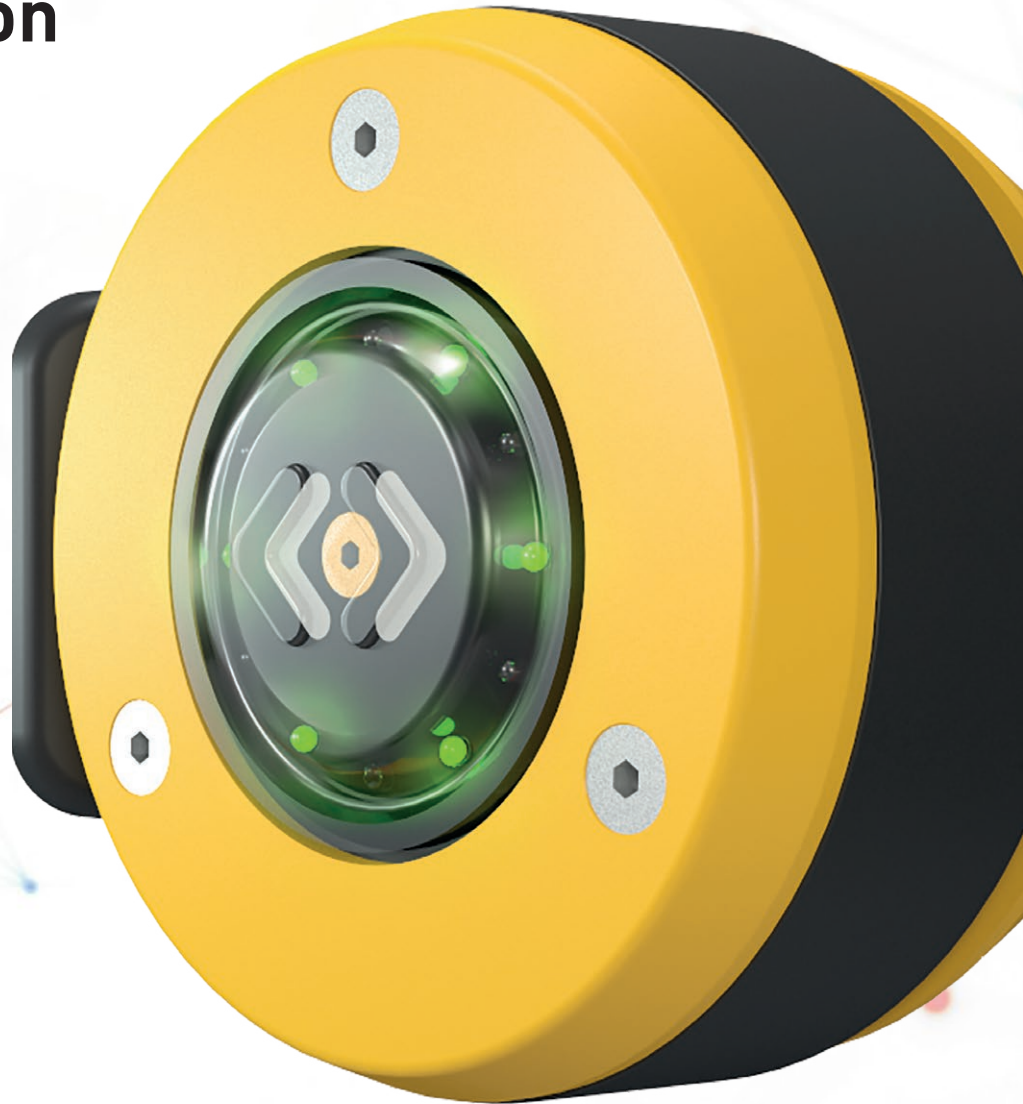


TSL-ESCHA and MAFELEC offer customers a wide range of user-friendly products in the interior of a bus (Photo: TSL-ESCHA)

www.tsl-escha.com



Double-Sided PK Push Button



Member of the
MAFELEC TEAM

New modern design of the PK push button series for double-sides glass installation.