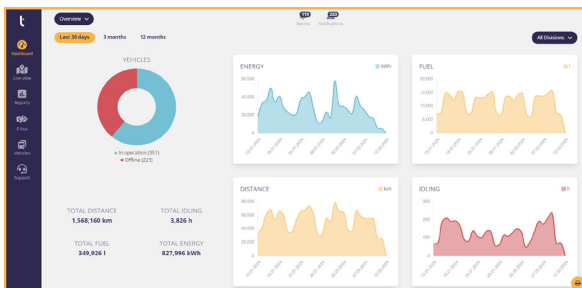


Tenix Bus/Fleet

Tenix Fleet supports traffic managers and operations staff in their daily work, by providing in-depth vehicle data. Tenix Fleet also provides data on which drivers are working at any given time and which vehicles they use. Drivers are supported with how best to drive sustainably and comfortably in the eco drive module.



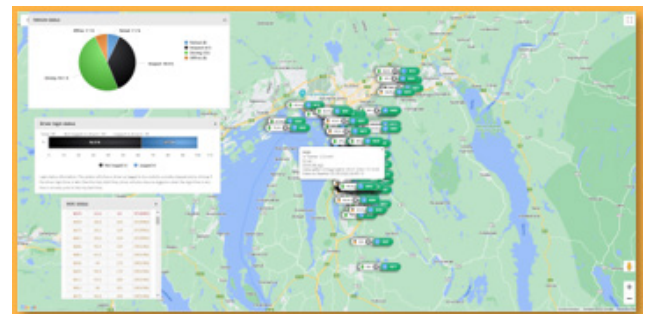
Dashboard view

Key Features

- Live map (RTIS)
- Reports (fuel usage, speed, etc.)
- Alarms
- Tachograph download
- Eco drive
- Sensor Temperature/tyres etc.
- Brand independent

Positioning

- Each vehicle is represented on a continuously updated map where information about the driver, start time and battery condition can be presented.
- The route of each vehicle can be retrieved for tracking and verification.
- It is also possible to search for registered vehicles within a given period around a given location, if the vehicle ID is missing.



Live map view

Driver Support

- Eco-drive allows detailed analysis of driving style to assist drivers in improving efficiency and safety.
- Driving style is scored based on recorded data from the accelerometer, GPS and vehicle FMS data. The basis of the scoring is: hard braking, hard turning, acceleration rate, vehicle idle time, impact of fuel consumption and engine speed.





Software that makes transport smart.

Automatic tachograph download

- Download tachographs automatically. Data can be uploaded to every tachograph system, brand independent.
- Tachograph data collection can be made more efficient and save a lot of time.

Vehicle data

- Data is collected primarily by FMS port, but also directly from the vehicle in some cases.
- Data such as: Consumption, odometer, vehicle temperature, alerts and battery status for electric bus, is obtained.

Division	Vehicle	Total Century	Total Odometer	Total Fuel Used	Fuel in driving	Fuel in idling	Driving time	Idling time	Avg. Mile
A	1	0	132.14	0	0	0	07:04:10	00:00:00	0
B	2	801.9	1077.84	428.88	422.02	6.825	29:47:05	01:58:18	4.90
C	3	0	194.87	0	0	0	08:41:46	00:00:00	0
D	4	0	418.44	41.84	41.84	0	12:44:44	00:00:00	0
E	5	3585.94	10387.22	0	0	0	63:01:33	25:55:57	0
F	6	364.81	487.10	114.53	113.19	1.34	07:05:35	01:52:24	3.14
G	7	4088.81	10871.86	1386.34	1352.16	14.19	75:20:32	15:52:13	3.11
H	8	4534.38	12887.41	1311.16	1301.84	9.32	83:30:01	18:51:48	2.89

Vehicle data

Connected alcolock

- If an alcolock detects a positive result, an automated notification is sent to dispatch.



Schaus

“Our customers use us when they need safe and well-functioning transport. With Tenix Bus, we can now guarantee this fact using data.”

Lasse Aarstrand, General Manager

Benefit Summary

- Have an in-depth overview of your entire fleet, as well as the drivers.
- Easily and quickly get notified about problems such as crashes or tyre pressure.
- Create in-depth reports about your fleet’s fuel consumption, idle time, distance and more.
- Download tachographs automatically and integrate Tenix Fleet with internal systems.