



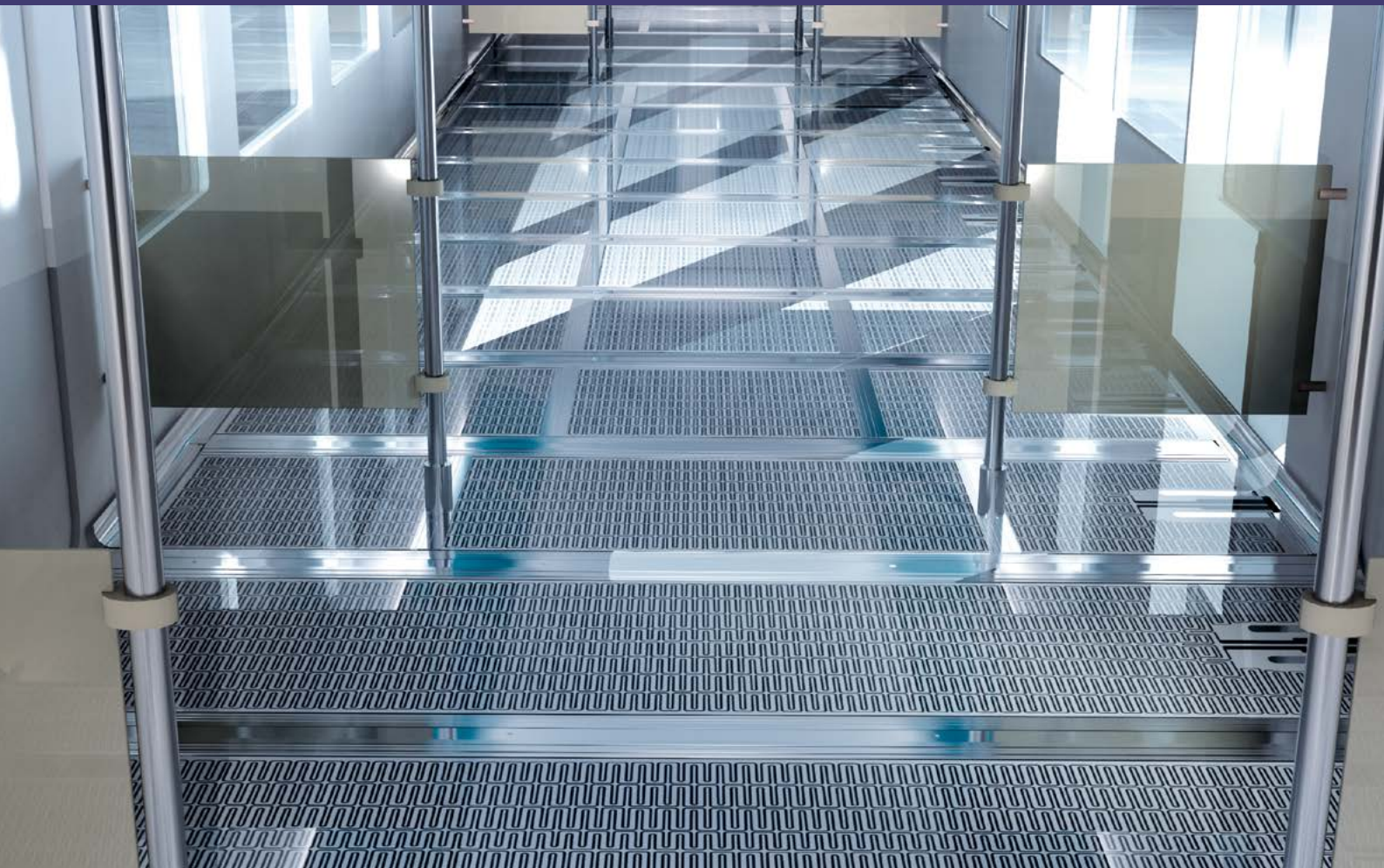
**Mobility**

# COMFLOOR®



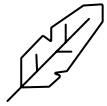
Lightweight modular  
flooring system for rail  
and road vehicles

[www.3acompositescmobility.com](http://www.3acompositescmobility.com)

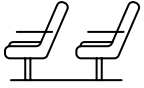


# COMFLOOR®

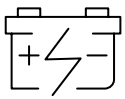
---



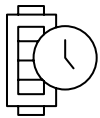
lightweight



passenger comfort



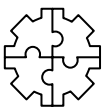
energy efficiency



long lifetime



customization



easy assembly



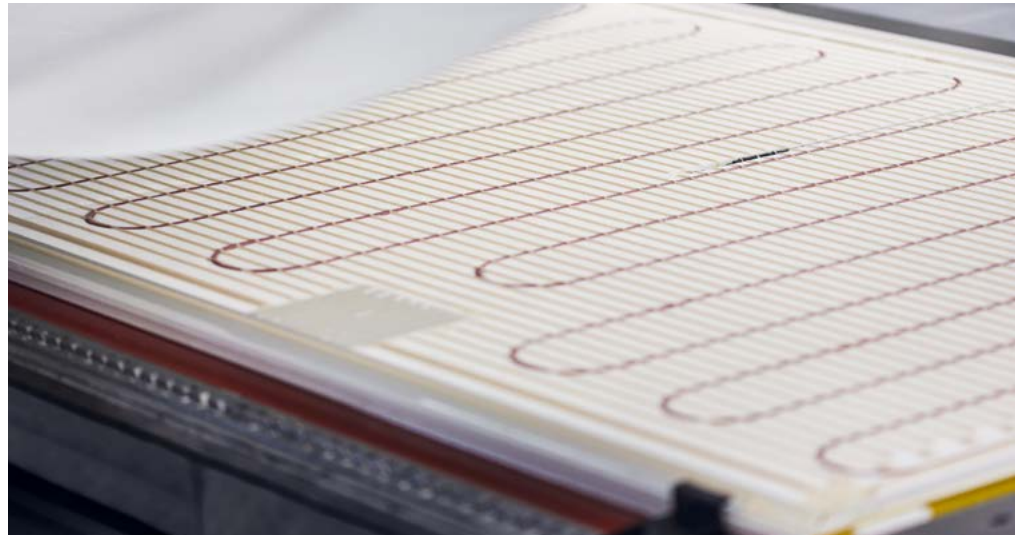
recyclable



fire protection

Our solution for spacious, ergonomic passenger compartments. Lightweight, modular, strong and innovative, COMFLOOR® is already trusted and used by many leading international rail and road vehicle manufacturers. Our design's unique clamping system ensures quick, easy assembly and installation. The units are maintenance-free and ensure reliable, exceptional performance over at least a 30-year lifetime.

---



## Customized Panels

Thin, durable sandwich panels are designed to fit all floor shapes and dimensional specifications. The rigid sandwich structure provides solid insulation and can optionally be equipped with a fully integrated heating system. Heated and non-heated panels can be combined according to customer choice.



# Overview

---

COMFLOOR® includes an optional panel-integrated heating system. Bonded to the panel's foam core, the heating system is also customized to match any panel dimensions and specifications.

---

## Homogeneous Heat Distribution, Increased Comfort

The panel's foam core insulates the heating system from the surrounding interfaces while an aluminium layer on top optimizes thermal distribution to the passenger area. **COMFLOOR® combines superior thermal comfort with a minimum of energy consumption.** Metal cover sheets ensure optimal protection against moisture, scratches, cracks and other mechanical damage. Their smooth panel provides an ideal surface for all types of bonded floor coverings.



## System Powering

Heated modules are equipped with **quick-to-install connectors**, simplifying the replacement process in the case of any future panel exchanges. All electrical wiring is fully integrated into the module.

**The system's power supply can be adapted to voltages supplied by the vehicle's electrical system** – such as 120, 230, 400 and 680 volts AC or DC. **The panels can optionally be equipped with temperature sensors and thermostats to control the temperature.**

**Each panel is tested before shipment.**

---

## COMFLOOR® Advantages

- **Weight reduction of tare mass** up to 750 kg per unit
- Lower tare mass in each unit enables **energy-savings** and reduces wear on vehicle wheels, axles and brakes
- Reduced tare mass **allows higher payload**
- Strong, durable construction provides reliable, **maintenance-free operation for up to 30 years**
- Unique clamping system and modular panel design **reduces the assembly time by up to 80%**
- Thermal insulation integrated in the panel structure; **increases interior height of passenger compartments**
- Made of **eco-friendly, recyclable materials**
- Thin, lightweight panels **ideal for double-deck rail cars or buses**
- Protective braiding ensures that **current-carrying heating wires are completely shielded**; protection against electric and magnetic emissions included
- High performance in different heating densities: **homogeneous heat distribution provides superior comfort for passengers**
- **Heated and non-heated floor panels can be combined and located depending on customer requirements**
- **Easy “plug and play” assembly**: just connect the panel to your electrical power source and fix the clamping profiles

---

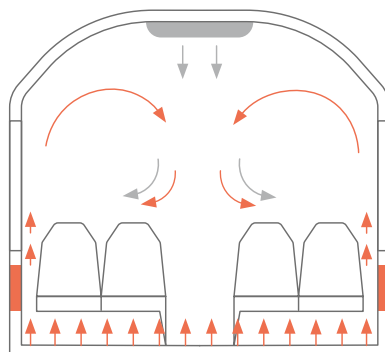
## COMFLOOR® in Service

- **Efficient heating system**
- Solid protection **against overheating**
- **Waterproof surfaces** support easy cleaning
- **Easy panel exchange** thanks to modular concept
- Robust panel cover sheet **provides optimal protection against vandalism and external damage**
- Used and trusted by **leading international rail and road vehicle manufacturers**

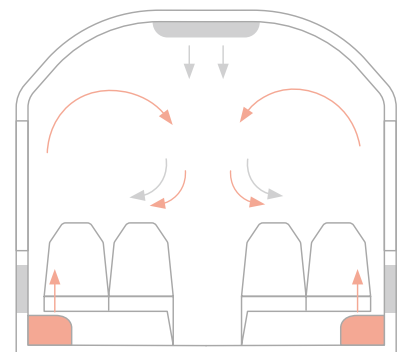
---

## COMFLOOR® Integrated Panel Heating

- Homogeneous heat distribution
- More passenger legroom and headroom
- Weight reduction
- Lower energy consumption
- Reduced CO<sub>2</sub> emissions result in a green footprint



COMFLOOR® Heating System



Conventional Heating

---

A smart and flexible solution for rail and road vehicles.

---

### **Heating Systems Designed To Your Needs**

Customized flooring fits to any dimension or required heat distribution. Made of non-toxic and recyclable materials that guarantee excellent long-term performance. COMFLOOR® is an approved system and complies with common fire and smoke standards.

### **Developed For Heavy Loads**

Lightweight structural system engineered for load-carrying capabilities of up to 700 kg per sq.m.



### **Your Passengers Will Thank You**

- More spacious passenger compartments mean **extra legroom and increased comfort** compared to conventional solutions
- **Quicker, more efficient and homogeneous heat distribution** provided by optional panel-integrated heating systems
- **Interior noise level is minimized** due to foam core components
- **Superior interior aesthetics and ergonomics** mean happy and relaxed passengers



***Mobility***

**3A Composites Mobility AG**  
**Park Altenrhein**  
**CH-9423 Altenrhein**  
**Switzerland**  
**+41 71 858 48 48**

**3A Composites Mobility S.A.**  
**Inwestorów 6**  
**39-300 Mielec**  
**Poland**  
**+48 17 773 78 00**

**[www.3acompositesmobility.com](http://www.3acompositesmobility.com)**