

# Timespace V700 NVR

DRIVING SECURITY



The Timespace V700 network video recorder (NVR) is Timespace's first product to use solely HD IP cameras. With up to 20 channels of HD IP recording, the V700 builds on the Timespace V-series reputation for reliability, and for the first time brings the convenience of an ONVIF interface (Profiles G and S). The V700 meets Transport for London's specification for bus CCTV\*.

Supporting up to 20 HD IP cameras and 4 HDMI monitor outputs, the V700 has built-in Power Over Ethernet (POE) connectors for quick and reliable installation. The V700's ONVIF interface allows integration with other on-board systems, providing a flexible and future-proof system.

Recording time is maximised with removable conventional or solid-state hard disks up to 4TB. Disks are fully-suspended for shock-protection.

Built-in CAN engineering data recording allows users to capture critical vehicle and driver performance statistics.

Timespace's Industry-leading PCLink software allows easy viewing, analysis and export of footage. PCLink displays data from the V700's built-in G-Sensor, along with GPS mapping analysis and CAN and alarm data. With Timespace's LANLink Live fleet management platform, users can remotely view, download and share footage from the V700 over mobile 4G/5G connections. LANLink also provides CCTV health data, GPS vehicle tracking and CAN engineering data.

Using SHA-2/AES-256 watermarking authenticated digital signature, embedded vehicle CAN data and GPS, time, date, speed and location, the V700 meets evidential requirements for court proceedings.

\*Version 2.2, effective from tranche 830 (April 2023)



## Recording performance

- 20 HD IP video inputs
- Max resolution 3840 x 2160
- Up to 25 IPS per camera
- H264 compression.

## Connectivity

- ONVIF-conformant (Profiles G and S)
- Alarm inputs, integrated CANLink recording, compatible with Bridge Alert
- Quick and easy footage upload and system monitoring via Timespace LANLink Live / WiFi / mobile networks
- Transport for London diagnostic reporting (IBUS) via a dedicated LAN port.

## Physical Characteristics

- Compact size with single-fixing quick-release mounting
- Fully-suspended, lockable hard disk for long and reliable operating life
- Industry-proven integral power and video connectors
- RJ45 camera-cable strain-relief.

## Compatibility

- Compatible with all existing Timespace software and accessories.

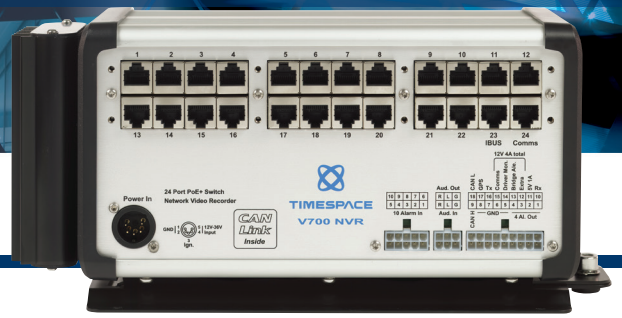


TIMESPACE

MANUFACTURED BY TIMESPACE IN THE UK

# Timespace V700 NVR

## DRIVING SECURITY



Full-IP Network Video Recorder



Local live view using Reviewer or video out to monitor



Review recordings directly from a removable cartridge



WiFi / 4G connection

Multi-channel live view and download via LANLink Live



Bridge Alert System

### Performance

#### IP Cameras

Image bit rate – quality setting	Typically 1-6Mb/s (camera-dependent)
IP video inputs	Up to 20
IP Camera Resolution	720P, 1080P, max 3840 x 2160
Image rate Min – Max	Up to 25 IPS per camera (camera-dependent)

#### Audio

Audio microphone input	2, selectable
Audio recording on IP cameras	Yes (not at launch)

#### Other

Video out	4 HDMI
Video Streaming Live view – multi channel	25 IPS
Hard disk capacity options	1TB, 2TB, 4TB
Solid state disk capacity options	1TB, 2TB
SD card capability	Up to 2TB
G Sensor	3 axis
Alarm input	10
Alarm output	4

### General Features

- ONVIF-conformant (Profiles G and S)
- H264 (MPEG-4 Part 10) compression
- Simultaneous record, live view and file download
- Built-in vehicle CAN engineering data recording
- Auto record on power-up or single button start/stop recording
- Recorder status indicators (LEDs)
- Timer shutdown for power saving
- Optional embedded GPS position & speed
- Local set-up and configuration using Timespace Reviewer
- Short circuit protection
- Multi ranging PSU with power monitoring diagnostics
- Removable, lockable hard disk cartridge
- Simple, intuitive menu system with help screens

### Optional Features

- Bridge Alert low bridge warning device
- LAN / Wi-Fi / 4G / 5G

### Connections / Interfacing

IP Cameras	POE RJ45 connectors
Video out	4 x HDMI connectors
Audio microphone in	2 on the 6-way Molex
Timespace Reviewer	1 x RJ45
LAN / WiFi / 3G / 4G (Comms)	1 x RJ45
IBUS	1 x RJ45
GPS	On the 18-way Molex
RS232	Tx / Rx on the 18-way Molex
Alarm inputs	10 on the 10-way Molex
Alarm output	4 on the 18-way Molex
Power input	5-pin XLR connector
Power output	5V and 4 x 12V on the 18-way Molex

### Physical Characteristics

Enclosure	Extruded Aluminium, with moulded end caps
Dimensions (mm) (including mounting plate)	327(l) x 126(w) x 151(h)
IP rating	IP50
Operating temperature range	-10 to 50 °C
Humidity	10 – 90% r.h., non condensing
Mounting plate hardware (included)	Screw-mounted
Power supply input	12 - 36V DC polarity protected
Continuous power – No Cameras, No reviewer, No monitors	15W
Continuous power – with cameras (typical*)	80W
Continuous power – Sleep mode, no Reviewer	0.6W
Max current on start up	3.6A
Maximum POE power	80W at 24V input, 40W at 12V input
Maximum 12V Molex power	80W
External power output	5V power output 10W (2 Amps, fused)
Weight- including removable cartridge and base plate, with strain relief	3.9Kg
Weight - including removable cartridge and base plate, without strain relief	3.7Kg

### Regulatory Approvals

- UKCA
- E Mark
- VCA CoP approval
- R118 (Fire Retardancy)
- RoHS
- WEEE

\*20 cameras, driver monitor, passenger monitor, no Reviewer.

Timespace Technology Ltd reserves the right to amend product specifications without notice and without incurring obligation.



**TIMESPACE**

Timespace Technology Ltd Lakeview Court Ermine Business Park Huntingdon PE29 6UA UK

t: +44 (0)1480 414147 f: +44 (0)1480 414146 e: mail@tspace.co.uk www.tspace.co.uk



FM 525394